

District Security Upgrades And Additions

Question and Responses

October 25, 2023

Q1-[ALL]-Who is responsible for the network drops, if needed?

R1-The winning vendor is responsible for all necessary drops.

Q2-[DOOR CAMERA SYSTEMS & ACCESS CONTROL SYSTEMS, READERS, ETC.]-Is the installation of the electronic strike for the RMS door access camera system part of the "Access Control Systems, Readers, Etc." or "Door Camera Systems" section of the RFP?

R2-The installation of the electronic strike will be part of the "Access Control Systems, Readers, Etc." section of the RFP.

Q3-[DOOR CAMERA SYSTEMS]-Is plenum rated cabling required for the RMS door access system?

R3-Yes, plenum rated cabling is required.

Q4-[DOOR CAMERA SYSTEMS]-Is Cat6 or Cat6A cabling required for the RMS door access system?

R4-Cat6 or better cabling is required.

Q5-[EMERGENCY ALERT DEVICES]-Are blanking panels required in locations where clocks/speakers were removed or replaced?

R5-Blanking panels are required if the new clock does not fully cover the hole where the existing clock/speaker was installed. This will likely be more of a concern at Beechnau Elementary than it will be at RMS.

Q6-[SECURITY CAMERAS]-The RFP mentions replacement of existing security cameras and the addition of new cameras. Is the intention of the project to increase the total number of installed cameras?

R6-The intention of the project is to increase camera coverage within RMS and Beechnau Elementary by strategically removing old cameras and replacing them with new multi-lens units.

Q7-[SECURITY CAMERAS]-Does the District have a specific security camera model that they prefer?

R7-No, the District does not have a specific model required. The District does require current model Axis brand cameras that have at least 1080p or greater resolution.

Q8-[SECURITY CAMERAS]-The District specified that grant funds are being used for this project, but that they are limited. With that being said, should security cameras be listed as unit priced so that the District can choose which cameras and how many to implement?

R8-Yes, unit pricing is preferred due to the District's limited funds available for this project.

Q9-[ALL]-Is prevailing wage required for this project?

R9-No, prevailing wage requirements are not in place for this project.

Q10-[ALL]-Are patch cables required for this project?

R10-Yes, patch cables are required. Patch cables should be Cat6 or higher and should be approximately 3 feet in length on the switch end and approximately 10 feet in length on the device end. Any cables used in outdoor installations must be appropriately weather-rated.

Q11-[ALL]-What color patch cables are preferred?

R11-Access control devices and cameras require green patch cables. Emergency Alert Devices (clocks) and any other items require white patch cables.

Q12-[SECURITY CAMERAS]-On the north side exterior of RMS a security camera is called for. What area are you looking to cover with this camera?

R12-The District wants coverage of the parking lot with this camera.

Q13-[ALL]-Does the District have a lift available or are vendors required to provide a lift, as needed?

R13-Vendors are required to provide their own lift for any work that cannot be accomplished via ladders.

Q14-[SECURITY CAMERAS & DOOR CAMERA SYSTEMS]-Does RHS require an additional security camera for the front exterior entry of the building?

R14-No. RHS requires a door access camera at the front exterior entrance.

Q15-[SECURITY CAMERAS]-Is there storage capacity within the District's existing NVR to handle the footage from new security cameras?

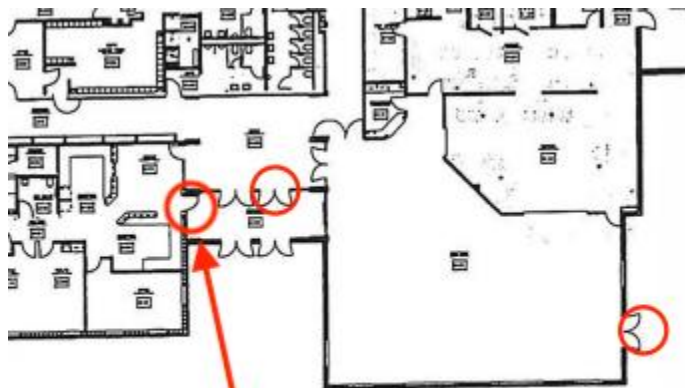
R15-Yes, the District NVR does have capacity for new/additional camera footage storage.

Q16-[DOOR CAMERA SYSTEMS & ACCESS CONTROL SYSTEMS, READERS, ETC.]-Is the AiPhone part of the “Access Control Systems, Readers, Etc.” section of the RFP?

R16-There are two sections in the RFP, one being “Access Control Systems, Readers, Etc.” and the other being “Door Camera Systems”. The two are related, but will be bid separately. Winning bidders of each category will be expected to work together, as needed, to successfully implement the Door Camera System.

Q17-[DOOR CAMERA SYSTEMS & ACCESS CONTROL SYSTEMS, READERS, ETC.]-Can you clarify the location of the doors requiring electronic strikes within the RMS entryway?

R17-RMS-MAP-3 correctly specifies where the door camera systems are to be installed. An electronic strike will need to be installed on the west location as that is not present. That was erroneously left off of RMS-MAP-1 and will be the responsibility of the winning vendor of the “Access Control Systems, Reader, Etc.” section of the RFP.



Additional electronic strike needed

Q18-[SECURITY CAMERAS]-Can the District provide a list of existing cameras in RMS and Beechnau Elementary?

R18-A list of existing RMS and Beechnau Elementary cameras is listed below.

Camera Name	Type	Model	Resolution
BCH 100 FRC ENTR	AXIS VAPIX	P3343	800x600
BCH 100 HdStrt Entry	AXIS VAPIX	P3343	800x600
BCH 100 Wing Bathroom	AXIS VAPIX	P3343	800x600
BCH 117 ENTR	AXIS VAPIX	P3343	800x600
BCH 300 EXT Entry North	AXIS VAPIX	P3343	800x600
BCH 300 Kinder Entry N	AXIS VAPIX	P3343	800x600
BCH 300 Play Entry South	AXIS VAPIX	P3343	800x600
BCH Cafe Exit West	AXIS VAPIX	P3343	800x600
BCH EXT 301 East	AXIS VAPIX	P3225-LVE Mk II	1920x1080
BCH EXT Admin East	AXIS VAPIX	P3225-LVE Mk II	1920x1080
BCH EXT East Parking	AXIS VAPIX	P3225-LVE Mk II	1920x1080
BCH EXT Flagpole	AXIS VAPIX	P3343	800x600
BCH EXT Gym NE	AXIS VAPIX	P3225-LVE Mk II	1920x1080
BCH EXT HdStart Entry	AXIS VAPIX	P3225-LVE Mk II	1920x1080
BCH EXT Headstart North	AXIS VAPIX	P3343	800x600
BCH EXT K Exit	AXIS VAPIX	P3343	800x600
BCH EXT Receiving	AXIS VAPIX	P3343	800x600
BCH Gym Entry West	AXIS VAPIX	P3343	800x600
BCH HdStart Playground	AXIS VAPIX	P3343	800x600
BCH MC Foyer Faces East	AXIS VAPIX	P3343	800x600
BCH Mid 300 South	AXIS VAPIX	P3343	800x600
RMS A Bathrooms East	AXIS VAPIX	P3343	800x600
RMS A Entry West	AXIS VAPIX	P3343	800x600
RMS AB Hallway Entry	AXIS VAPIX	P3343	800x600
RMS AB Hallway South	AXIS VAPIX	P3343	800x600
RMS B Bathroom East	AXIS VAPIX	P3364	800x600
RMS B Entry West	AXIS VAPIX	P3343	800x600
RMS BA Hallway Entry	AXIS VAPIX	P3343	800x600
RMS Cafe NE Corner	AXIS VAPIX	P3245-V	1920x1080
RMS Cafeteria	AXIS VAPIX	P3343	800x600
RMS D Hallway West Entry	AXIS VAPIX	P3343	800x600
RMS DC Hallway Entry	AXIS VAPIX	P3343	800x600
RMS DC Hallway South	AXIS VAPIX	P3343	800x600
RMS Entry Foyer SW	AXIS VAPIX	P3343	800x600
RMS EXT Entry	AXIS VAPIX	P3343	800x600
RMS EXT Parking Lot NW	AXIS VAPIX	P3343	800x600
RMS EXT Parking Lot SW	AXIS VAPIX	P3343	800x600
RMS EXT Receiving	AXIS VAPIX	P3343	800x600
RMS EXT Visitor Gate	AXIS VAPIX	P3343	800x600
RMS Main Entry	AXIS VAPIX	P3343	800x600
RMS MC DB Hallway	AXIS VAPIX	P3343	800x600
RMS Office/Entry Doors	AXIS VAPIX	P3343	800x600
RMS Office/Nurse Hallway	AXIS VAPIX	M3044-V	1280x720

Q19-[SECURITY CAMERAS]-Do the cameras require Pro or Enterprise licenses?

R19-The District requires Pro licensing for our cameras.